

Case Study



Customer
fibertime™

Industry
Telecommunications (ISP)

Country
South Africa

Products and Services
IP Transit backhaul connectivity, providing the scalable, low latency fiber infrastructure required to deliver affordable, uncapped internet access to township communities at scale.

“The Impact that we see on the ground is incredible. With multiple stories of people connecting, we are building a society in the townships that has a renewed hope for the future.”



CHALLENGE

Situation

For many years, communities living in South African townships have been excluded from accessing uncapped fiber internet, limiting their ability to participate fully in the digital economy. This lack of reliable and affordable connectivity has restricted opportunities for education, employment, entrepreneurship, and self determination.



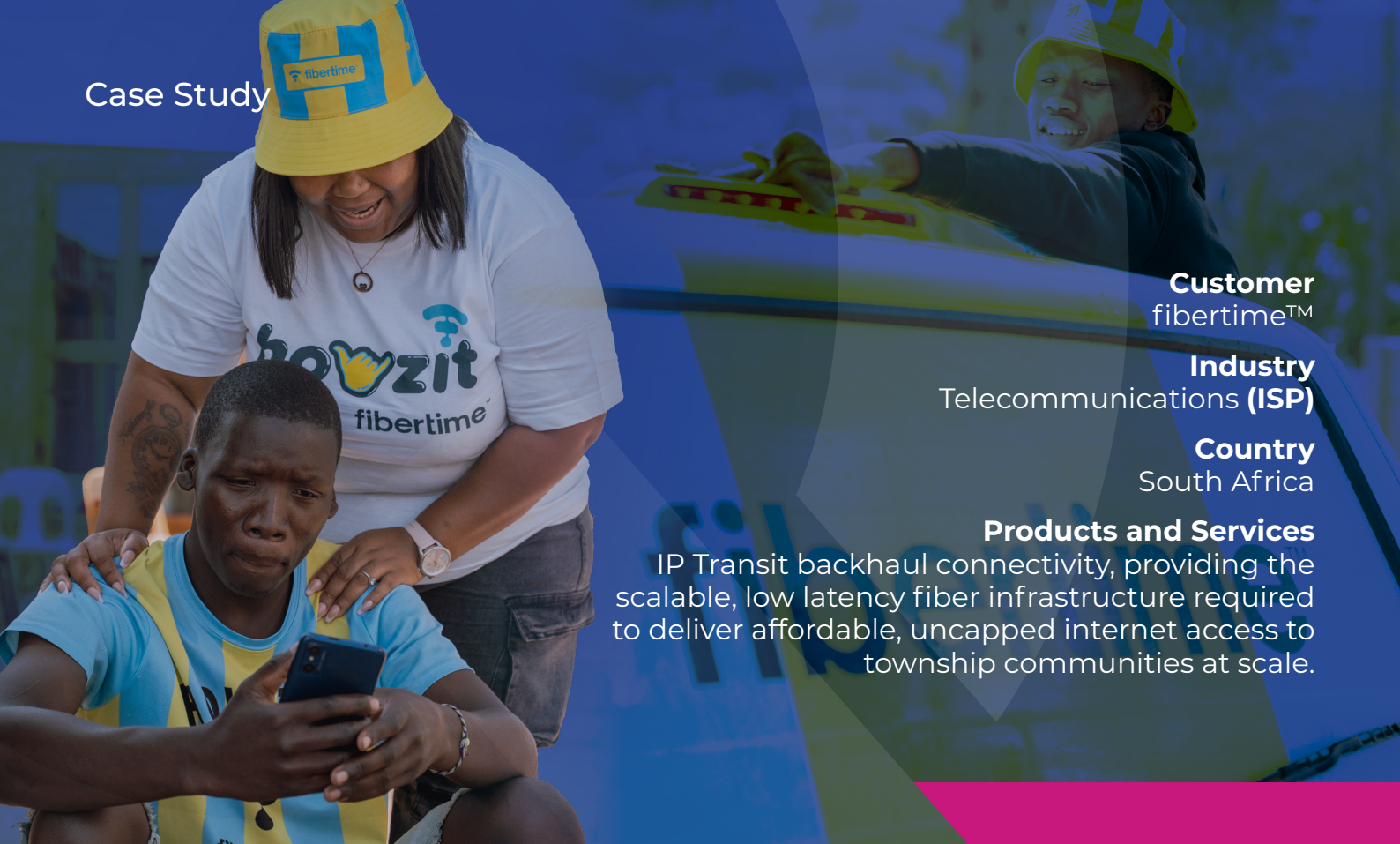
SOLUTION

Solution

Liquid Intelligent Technologies partnered with fibertime by providing reliable backhaul infrastructure and sharing a common vision to extend fiber connectivity into underserved township communities. Fiber was deployed across all types of homes within these areas, ensuring inclusive access regardless of housing type.

Residents were provided with 100Mbps uncapped fiber connectivity, delivering a high quality internet experience previously unavailable in these communities. To further reduce barriers to access and ease the burden of monthly costs, an innovative pay as you go model was introduced, allowing customers to purchase daily vouchers for as little as R5 per day, making fast, reliable internet both affordable and accessible.

Case Study



Customer
fibertime™

Industry
Telecommunications (ISP)

Country
South Africa

Products and Services
IP Transit backhaul connectivity, providing the scalable, low latency fiber infrastructure required to deliver affordable, uncapped internet access to township communities at scale.

“The Impact that we see on the ground is incredible. With multiple stories of people connecting, we are building a society in the townships that has a renewed hope for the future.”



Impact

What began as Proof of Concept connecting 4,000 homes in Kayamandi in August 2022 has grown into a transformative connectivity initiative, with over 200,000 homes connected to date.

The service now spans thirty township communities across South Africa, with momentum continuing to build as more than 1,000 new homes come online every day.

Beyond connectivity, the partnership has created a vital gateway to educational, economic, and entertainment opportunities, empowering individuals and families while fostering renewed hope and inclusion within township communities. One example is Andiswa, whose move to working from home has given her four extra hours each day to spend with her family, while easing the cost of daily travel.